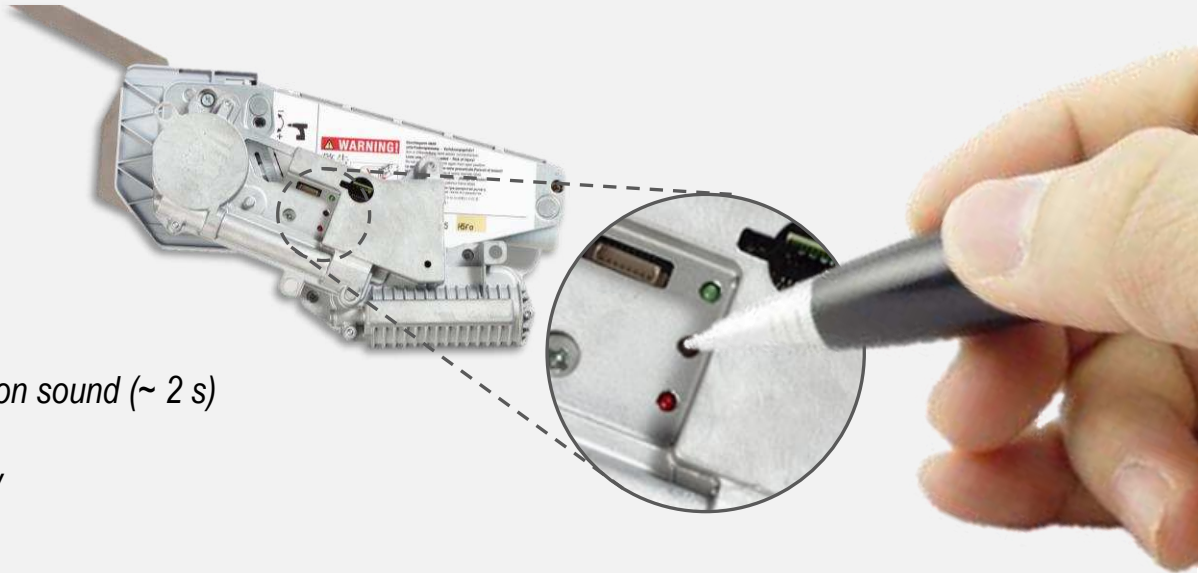




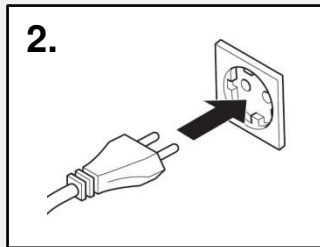
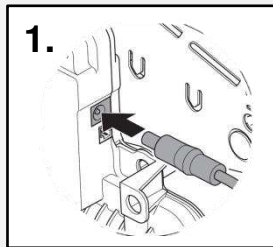
Programming with **push** and **click**



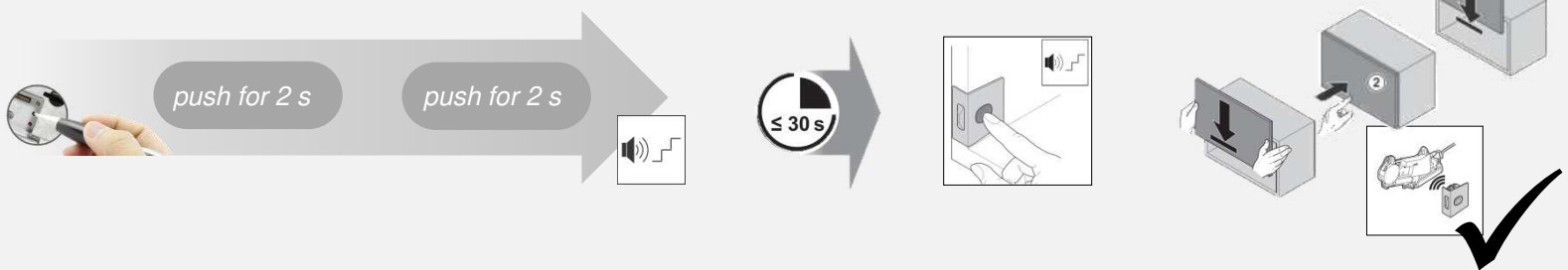
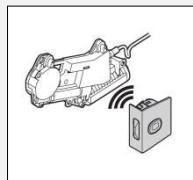
push Press the button and hold until confirmation sound (~ 2 s)

click Press the button and release immediately

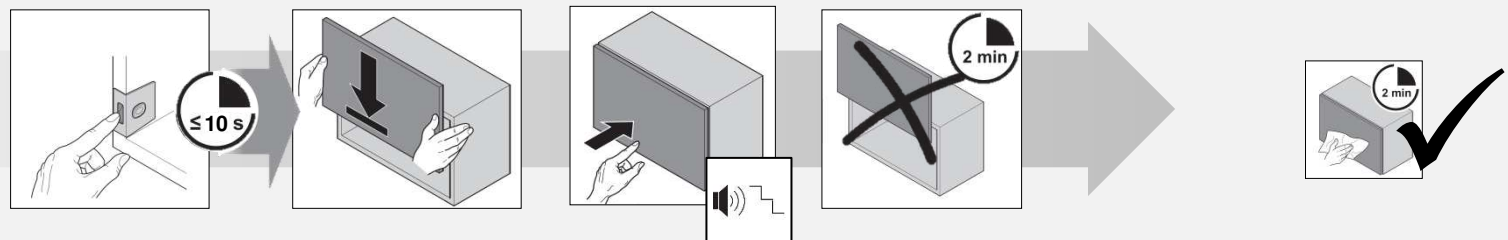
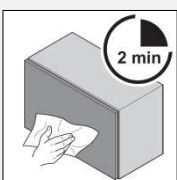
Power supply



Initial teaching



Front-cleaning mode

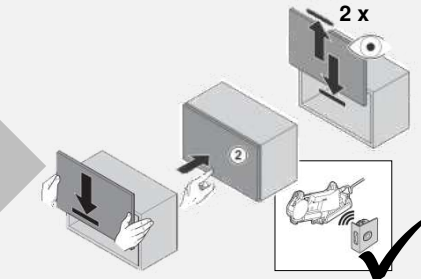
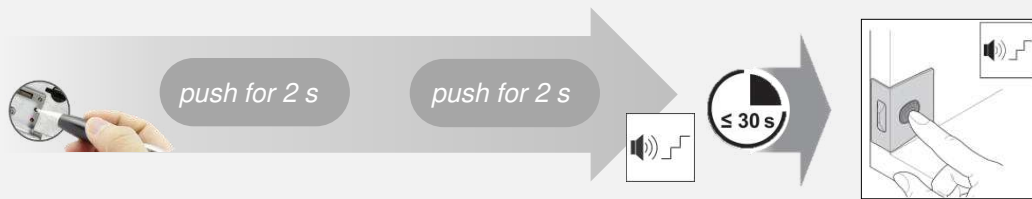
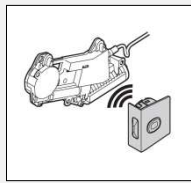


FREElift eTouch[™] Quick guide

by Kesseböhmer

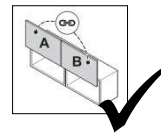
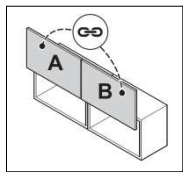


Initial teaching

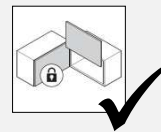
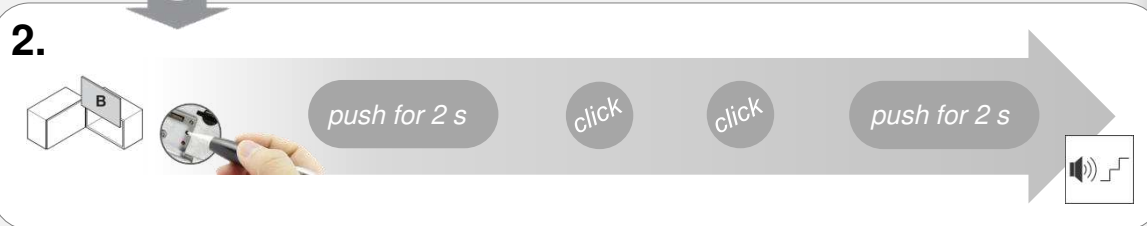
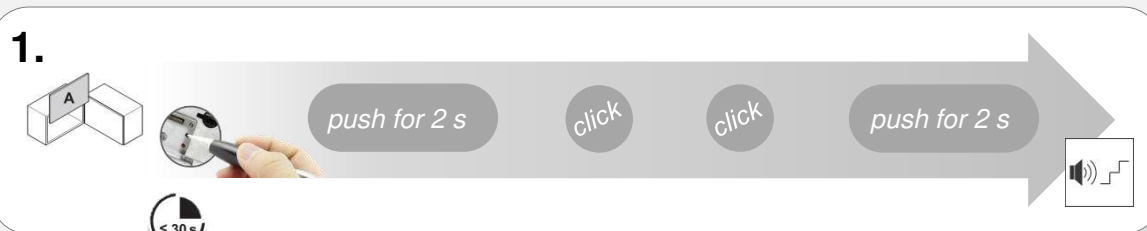
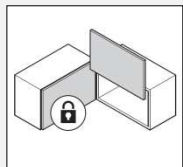


Optional functions

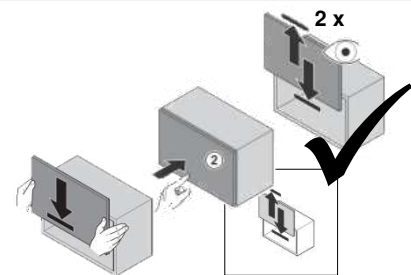
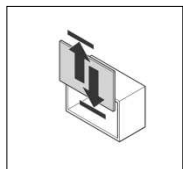
parallel



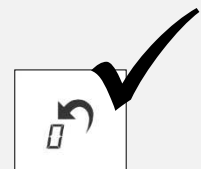
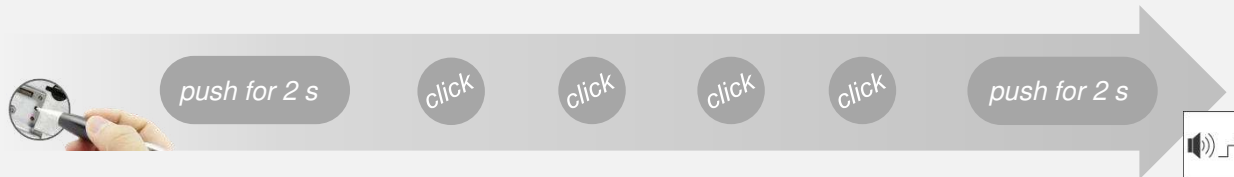
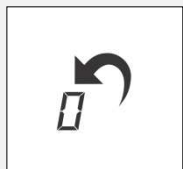
across corner



new reference run



reset



Front-cleaning mode

